

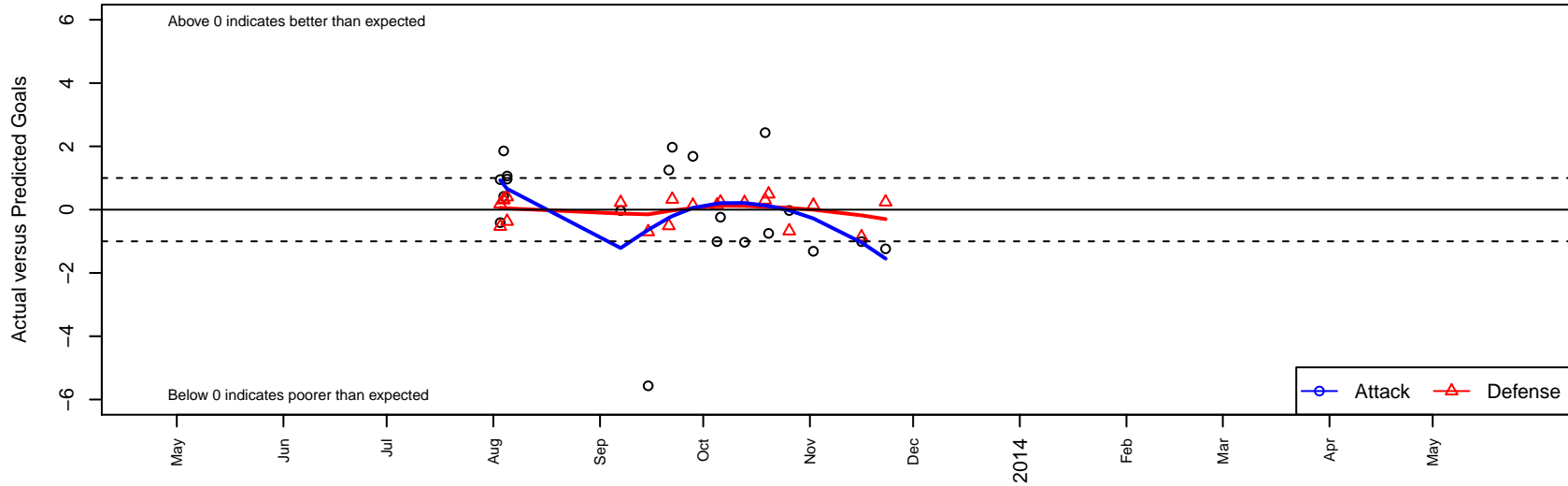
# Eagles SC G01

, CAS  
 G01 total strength=1518  
 attack=10.74 defense=13.46  
 fall league = CSL Gold U12  
 notes= Tim Kelly  
 alt names used:  
 Eagles SC G01  
 EAGLES SC (CAS)  
 EAGLES SC (CAS)  
 GU11 180-KELLY

Venues played:  
 Surf Girls U12 U12  
 CSL Gold U12



**Eagles SC G01**  
 Dots are actual minus expected GF (blue circles) and GA (red triangles).  
 Blue line is smoothed change in attack strength. Red is smoothed change in defense strength.



|      | <b>date</b> | <b>home</b>                       |   | <b>away</b>                 |   | <b>venue</b>       | <b>pred.home</b> | <b>pred.away</b> |
|------|-------------|-----------------------------------|---|-----------------------------|---|--------------------|------------------|------------------|
| 6658 | 2013-11-23  | Simi Valley Eclipse G01           | 0 | Eagles SC G01               | 2 | CSL Gold U12       | 0.24             | 3.24             |
| 6564 | 2013-11-16  | Eagles SC G01                     | 3 | Eagles SC White G01         | 1 | CSL Gold U12       | 4.01             | 0.14             |
| 6300 | 2013-11-02  | Canyon FC G01                     | 0 | Eagles SC G01               | 2 | CSL Gold U12       | 0.13             | 3.31             |
| 6155 | 2013-10-26  | Eagles SC G01                     | 3 | BYSC Corona United Blue G01 | 1 | CSL Gold U12       | 3.03             | 0.32             |
| 6115 | 2013-10-20  | Fullerton Rangers White G01       | 0 | Eagles SC G01               | 1 | CSL Gold U12       | 0.49             | 1.75             |
| 5989 | 2013-10-19  | Eagles SC G01                     | 9 | FC Golden State G01         | 0 | CSL Gold U12       | 6.57             | 0.30             |
| 5937 | 2013-10-13  | Celtic Academy G01                | 0 | Eagles SC G01               | 3 | CSL Gold U12       | 0.22             | 4.03             |
| 5756 | 2013-10-06  | Eagles SC G01                     | 3 | Simi Valley Eclipse G01     | 0 | CSL Gold U12       | 3.24             | 0.24             |
| 5633 | 2013-10-05  | Eagles SC White G01               | 0 | Eagles SC G01               | 3 | CSL Gold U12       | 0.14             | 4.01             |
| 5484 | 2013-09-28  | Eagles SC G01                     | 5 | Canyon FC G01               | 0 | CSL Gold U12       | 3.31             | 0.13             |
| 5438 | 2013-09-22  | BYSC Corona United Blue G01       | 0 | Eagles SC G01               | 5 | CSL Gold U12       | 0.32             | 3.03             |
| 5332 | 2013-09-21  | Eagles SC G01                     | 3 | Fullerton Rangers White G01 | 1 | CSL Gold U12       | 1.75             | 0.49             |
| 5281 | 2013-09-15  | FC Golden State G01               | 1 | Eagles SC G01               | 1 | CSL Gold U12       | 0.30             | 6.57             |
| 5023 | 2013-09-07  | Eagles SC G01                     | 4 | Celtic Academy G01          | 0 | CSL Gold U12       | 4.03             | 0.22             |
| 4588 | 2013-08-05  | Eagles SC G01                     | 3 | Real Colorado National G01  | 0 | Surf Girls U12 U12 | 1.94             | 0.40             |
| 4590 | 2013-08-05  | Eagles SC G01                     | 2 | South Bay Force Quigs G01   | 1 | Surf Girls U12 U12 | 1.03             | 0.63             |
| 4570 | 2013-08-04  | Eagles SC G01                     | 2 | Seattle United Copa G01     | 0 | Surf Girls U12 U12 | 1.58             | 0.32             |
| 4579 | 2013-08-04  | Eagles SC G01                     | 5 | Crossfire Premier A G01     | 0 | Surf Girls U12 U12 | 3.14             | 0.30             |
| 4520 | 2013-08-03  | Santa Rosa United Earthquakes G01 | 0 | Eagles SC G01               | 2 | Surf Girls U12 U12 | 0.18             | 2.41             |
| 4521 | 2013-08-03  | West Coast FC G01                 | 1 | Eagles SC G01               | 3 | Surf Girls U12 U12 | 0.47             | 2.05             |